



## Download the Owner's Manual

Please download and read the complete FC Owner's Manual from <http://fractalaudio.com/fcm>



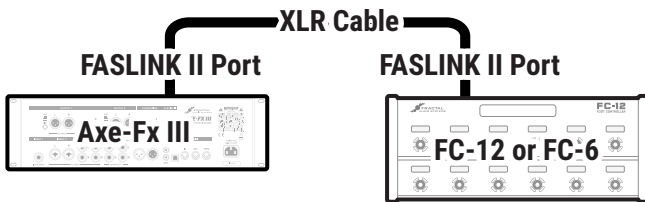
## Upgrade the Axe-Fx III

The FC Controller requires Axe-Fx III firmware 2.05 or newer. To download updates, please visit <http://www.fractalaudio.com/3d>



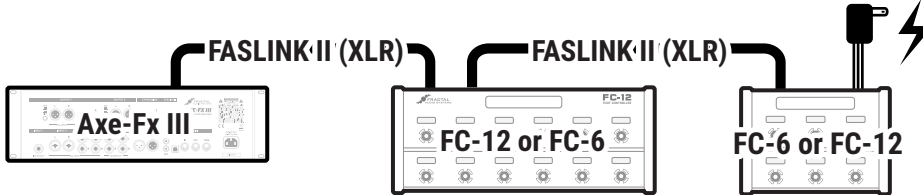
## CONNECT TO THE AXE-FX III

Connect the FC to the Axe-Fx III over **FASLINK II** using a single standard XLR cable. This connection powers the first FC and handles all communication between both units. The FC is "hot swappable" so there is no need to power down the Axe-Fx III.



### Special Instructions for "Daisy-Chain" Setups

Up to four FC units can be daisy-chained to create larger systems or to "Mirror" onstage and offstage units. Daisy-chaining uses FASLINK II for all communications across the chain. The first FC is powered by FASLINK (as shown above). Each additional unit in the chain requires its own AC Power supply. See the FC Owner's Manual for more on daisy-chaining.



Each FC in the chain except the first requires its own AC adapter rated at 9–12V DC, 1000 ma. AC Adapters are widely available and can also be purchased from [shop.fractalaudio.com](http://shop.fractalaudio.com)



## SET UP EXPRESSION PEDALS

### Connect & Calibrate

You can connect up to four expression pedals to each FC Controller using TRS-to-TRS cables.

Each pedal needs to be calibrated before use:

- 1) On the Axe-Fx III, open **SETUP | FC Controllers** and turn to the **Remote** page.
- 2) Navigate to the **Pedal Calibration** function for the desired pedal and press **ENTER**.
- 3) Follow the instructions to calibrate. The on-screen "slider" should move as you do.
- 4) Press **ENTER** when finished.

Repeat this process for each connected pedal and press **EXIT** or **HOME** when finished.

Fractal Audio "EV" pedals are ideal for use with the FC Controller. Find them at [shop.fractalaudio.com](http://shop.fractalaudio.com)  
Many 3rd party pedals will also work.



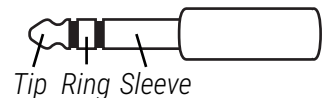
### Assigning Pedals

The Axe-Fx III "Modifiers" system allows FC pedals (and switches) to control sound parameters. Factory presets, however, do not use FC pedals directly. Instead, they use a go-between called an "External Controller". Any External Controller can be set to use any FC pedal. As an example, let's set **External 1** (used for WAH in many presets) to use **FC#1 Pedal 1**. This is done on the Axe-Fx III:

- 1) Open **SETUP | MIDI/Remote** and turn to the **External** page.
- 2) Locate the **External Controller** of your choice, numbered 1–16. (Use **External Control 1** for this example).
- 3) Turn the **VALUE** wheel to set **External 1** to "**FC#1 PEDAL 1**".
- 4) Set other external controllers as desired and press **EXIT** 2x to finish.

See the FC Owner's Manual for more on FC Pedals and Switches.

TRS = "Tip-Ring-Sleeve"



## 4 FC ESSENTIAL CONCEPTS

### THE FC IS ORGANIZED AROUND “LAYOUTS”

A layout is a set of up to twelve footswitch definitions, each with its own individual **Tap Function** and **Hold Function**.

Changing to a different layout (see below) is like changing to a different “page” of footswitches. For example, one layout might be used to select Presets, while another operates the Looper. Layouts have numbers and names to facilitate their setup and use.

Any layout can be completely customized. You can change the Tap or Hold Function of any switch right on the Axe-Fx III using “EZ” or deep editing tools. Layouts are global, but there are ways to change the functions of individual footswitches on a per-preset basis.

The Axe-Fx III provides eight layouts. If you completed Step 2 on the first page of this guide, your rig is now pre-loaded with default layouts for your FC. See the next page for a Quick Start guide to default layouts, and see the FC Owner’s Manual for more details.

### FOOTSWITCHES ARE SET UP USING “FUNCTIONS”

Every footswitch in every layout can have its own **Tap Function** and **Hold Function**. Functions are arranged in Categories like “Presets”, “Scenes” or “Effects”. The FC Owner’s Manual includes a complete guide to all categories and functions.

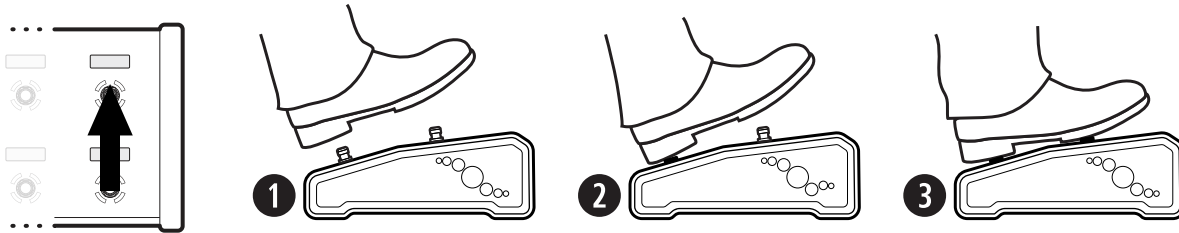
Every **Category** has its own default **LED ring color**. You can change these default colors – or the color of any individual switch.

The **Mini-Display** for each switch shows a “label” for the Tap function. While the switch is depressed – even for a normal “tap” – the label changes to show the Hold function.

See EZ Editing (#6, below) for an introduction to setting up footswitches. Review the FC Owner’s Manual for a complete guide to layouts, footswitches, functions, and more.

## 5 SWITCHING TO A DIFFERENT LAYOUT

Switching from one layout to another is the key to the versatility of the FC. There are many ways to do this, but the built-in **Master Layout Menu** (“MLM” for short) is the essential starting point. To show the MLM, **rock your foot** from heel to toe over the two **right-most** footswitches on your FC, as shown in the illustration below:



Once the Master Layout Menu is shown, select any footswitch to load that layout and exit the MLM.

On the FC-12, the entire MLM is shown at once.

On the FC-6, perform the MLM Switch Combo *again* to switch between MLM “pages” for Layouts 1–6 and Layouts 7–8.

## 6 EDITING FC SWITCHES WITH THE “EZ” PAGE

ALL setup and configuration for the FC is performed through the Axe-Fx III.

The EZ Edit page makes it simple to change any footswitch to perform any function. Here’s a Quick Start Guide:

- 1) On the Axe-Fx III, open **SETUP | FC Controllers** and page to the **EZ** page.
- 2) Tap the desired FC footswitch. If you need to change the layout, do this at the top of the EZ page.
- 3) Use the NAV and VALUE controls to operate the EZ menu.
- 4) Be sure to notice that TAP and HOLD offer different settings. Set the Category and the Function for each as desired.
- 5) Set any parameters for the selected Function as desired. For example, when you select **Category: Effect** and **Function: Bypass**, an “Effect” parameter appears to let you dial in the desired effect. (“Drive 1”, for example.) You can also customize the **Switch Ring Color** and **Mini-Display Labels**.
- 6) To continue, you can tap a different footswitch to set it up, or press **EXIT** when finished.

To avoid annoying screen jumps and sonic mishaps, all footswitches are **DISABLED** while you are on the EZ page. Change to a different menu page or press **EXIT** to test.

# 7 THE FACTORY DEFALUT LAYOUTS

Given the unique needs of every musician, there is no “one-size-fits-all” way of using the FC. The default layouts are therefore designed to showcase the unit’s basic capabilities. They provide beginners with an easy way to select presets, change scenes, toggle effects, operate the looper and more, with little to no explanation required. As introduced on the previous page, **EZ Edit** and other tools detailed in the FC Owner’s Manual make it easy to alter or totally replace these layouts to suit your needs. Axe-Edit will even ultimately provide tools to download and share FC layouts and more.

- ▶ Except in a few cases as noted, the default layouts do not include “Hold” functions.
- ▶ Before the “Per-Preset” layout will work, you’ll need to add switch definitions to your presets. See the FC Owner’s Manual.
- ▶ Layouts 7 & 8 are examples to accompany a tutorial in the FC Owner’s Manual.

## FC-12 LAYOUTS

**1 PRESETS** *P= “Preset within current Bank”*

P6	P7	P8	P9	P10	Bank +1
P1	P2	P3	P4	P5	Bank -1

**2 SCENES** *S= “Scene within current Preset”*

S5	S6	S7	S8	Preset +1	Tap
S1	S2	S3	S4	Preset -1	Tune

**3 EFFECTS (BYPASS)**

Chorus 1	Pitch 1	Delay 1	MultiDly1	Plex 1	Reverb 1
Comp 1	TremPan1	Drive 1	Phaser 1	Flanger 1	Rotary 1

**4 CHANNELS**

Drive 1 A	Drive 1 B	Drive 1 C	Drive 1 D	Phaser 1A/B	Reverb 1 A/B
Amp 1 A	Amp 1 B	Amp 1 C	Amp 1 D	Delay 1A/B	Drive 2 A/B

**5 LOOPER**

--	--	Undo/Erase	Reverse	Half Speed	LPR Bypass
Record	Play	--	Once	Tempo	Tune

**6 PER PRESET (PLACEHOLDERS)**

PP#7	PP#8	PP#9	PP#10	PP#11	PP#12
PP#1	PP#2	PP#3	PP#4	PP#5	PP#6

**7 PERFORM 1**

<EFFECTS> (Loads Layout 8)	P1	P2	P3	P4	Preset +4
TAP:Tempo HOLD:Tuner	S1	S2	S3	S4	Preset -4 HOLD:Reveal

**8 PERFORM 2**

<MAIN> (Loads Layout 7)	Flange 1	Delay 1	Plex 1	Rotary 1	Reverb 1
Comp 1	PanTrem1	Phaser 1	Drive 1	Chorus 1	Amp 1 A/B HOLD:Reveal

## FC-6 LAYOUTS

**1 PRESETS** *P= “Preset within current Bank”*

P3	P4	Bank +1
P1	P2	Bank -1

**2 SCENES** *S= “Scene within current Preset”*

S4	S5	S6
S1	S2	S3

**3 EFFECTS 1 BYPASS**

Delay 1	Reverb 1	MORE >> (Loads Layout 4)
Comp 1	Drive 1	Chorus 1

**4 EFFECTS 2 BYPASS**

Rotary 1	Plex 1	<< MORE (Loads Layout 3)
PanTrem1	Phaser 1	Flanger 1

**5 LOOPER**

Reverse	Undo	Half Speed
Record	Play	Once

**6 PER PRESET (PLACEHOLDERS)**

PP#4	PP#5	PP#6
PP#1	PP#2	PP#3

**7 PERFORM 1**

Preset -1	<EFFECTS> (Loads Layout 8)	Preset +1
S1	S2	S3 HOLD:Reveal

**8 PERFORM 2**

Chorus 1	<MAIN> (Loads Layout 7)	TAP:Tempo HOLD:Tuner
Drive 1	Delay 1	Reverb 1 HOLD:Reveal

For both FC-6 and FC-12, effect switches on layout 8 also feature “Hold” functions to toggle between effect channels A and B, except the lower right switch which momentarily reveals the hold functions of other switches.

# GETTING HELP

Should you require any assistance with your new FC unit, visit <http://support.fractalaudio.com>

Our forum is also an excellent resource, with members helping members around the clock: <http://forum.fractalaudio.com>

## WARRANTY

Fractal Audio Systems warrants that your new Fractal Audio Systems product shall be free of defects in materials and workmanship for a period of one (1) year from the original date of purchase.

During the warranty period, Fractal Audio Systems shall, at its sole option, either repair or replace any product that proves to be defective upon inspection by Fractal Audio Systems.

Fractal Audio Systems reserves the right to update any unit returned for repair and to change or improve the design of the product at any time without notice. Fractal Audio Systems reserves the right to use reconditioned parts and assemblies as warranty replacements for authorized repairs. This warranty is extended to the original retail purchaser for units purchased directly from Fractal Audio Systems or one of its authorized distributors or resellers.

This is your sole warranty. Fractal Audio Systems does not authorize any third party, including any dealer or sales representative, to assume any liability on behalf of Fractal Audio Systems or to make any warranty for Fractal Audio Systems. Fractal Audio Systems may, at its option, require proof of original purchase date in the form of a dated copy of original authorized dealer's invoice or sales receipt. Service and repairs of Fractal Audio Systems products are to be performed only at the Fractal Audio Systems factory or a Fractal Audio Systems authorized service center. Fractal Audio Systems may require advanced authorization of repairs to authorized service centers. Unauthorized service, repair or modification will void this warranty.

### **DISCLAIMER AND LIMITATION OF WARRANTY**

THE FOREGOING WARRANTY IS THE ONLY WARRANTY GIVEN BY FRACTAL AUDIO SYSTEMS AND IS IN LIEU OF ALL OTHER WARRANTIES. ALL IMPLIED WARRANTIES, INCLUDING WARRANTIES OF MERCHANTABILITY AND FITNESS FOR ANY PARTICULAR PURPOSE, EXCEEDING THE SPECIFIC PROVISIONS OF THIS WARRANTY ARE HEREBY DISCLAIMED AND EXCLUDED FROM THIS WARRANTY. UPON EXPIRATION OF THE APPLICABLE EXPRESS WARRANTY PERIOD (1 YEAR), FRACTAL AUDIO SYSTEMS SHALL HAVE NO FURTHER WARRANTY OBLIGATION OF ANY KIND, EXPRESS OR IMPLIED. FRACTAL AUDIO SYSTEMS SHALL IN NO EVENT BE LIABLE FOR ANY SPECIAL, INCIDENTAL OR CONSEQUENTIAL DAMAGES SUFFERED BY THE PURCHASER OR ANY THIRD PARTY, INCLUDING WITHOUT LIMITATION, DAMAGES FOR LOSS OF PROFITS OR BUSINESS, OR DAMAGES RESULTING FROM USE OR PERFORMANCE OF THE PRODUCT, WHETHER IN CONTRACT OR IN TORT. FRACTAL AUDIO SYSTEMS SHALL NOT BE LIABLE FOR ANY EXPENSES, CLAIMS, OR SUITS ARISING OUT OF OR RELATING TO ANY OF THE FOREGOING. Some states do not allow the exclusion or limitation of implied warranties so some of the above limitations and exclusions may not apply to you. This warranty gives you specific legal rights, and you may also have other rights, which vary, from state to state. This warranty only applies to products sold and used in the USA and Canada. Fractal Audio Systems shall not be liable for damages or loss resulting from the negligent or intentional acts of the shipper or its contracted affiliates. You should contact the shipper for proper claims procedures in the event of damage or loss resulting from shipment.

